

Abbott & Abbott

Estate Agents, Valuers and Lettings

Flat 33, Belmont Terminus Road

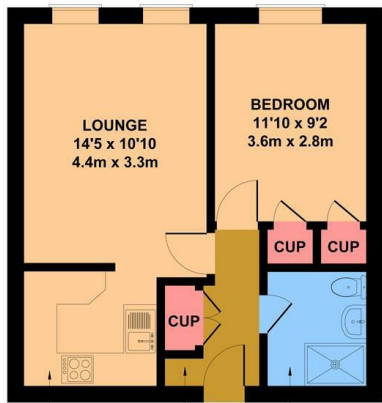
£89,000



- Second (Top) floor retirement flat, served by lift, specifically for the over-60's
- South-facing bedroom with built-in wardrobe
- Good size, south-facing lounge
- Kitchen with fitted hob
- Shower room
- Attractive block with house manager, resident's lounge and laundry
- Attractive south-facing communal gardens
- Electric heating and uPVC double glazed windows
- No onward chain



Floor Plan



KITCHEN
7'10 x 6'11
2.4m x 2.1m

HALL
9'6 x 5'11
2.9m x 1.8m

SHOWER ROOM
6'11 x 5'11
2.1m x 1.8m

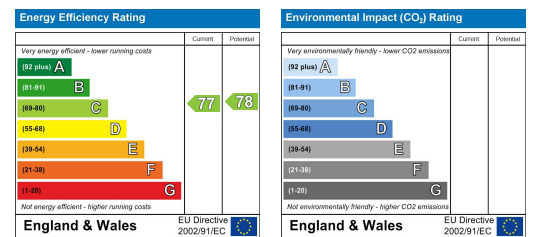
APPROX. FLOOR
AREA 442 SQ.FT.
(41.1 SQ.M.)

Not to Scale. Produced by The Plan Portal 2025
For Illustrative Purposes Only.

Area Map



Energy Efficiency Graph



These particulars, whilst believed to be accurate are set out as a general outline only for guidance and do not constitute any part of an offer or contract. Intending purchasers should not rely on them as statements of representation of fact, but must satisfy themselves by inspection or otherwise as to their accuracy. No person in this firm's employment has the authority to make or give any representation or warranty in respect of the property.

25 Devonshire Road, Bexhill On Sea, East Sussex, TN40 1AH
Tel: 01424 212233 Email: sales@abbottandabbott.co.uk